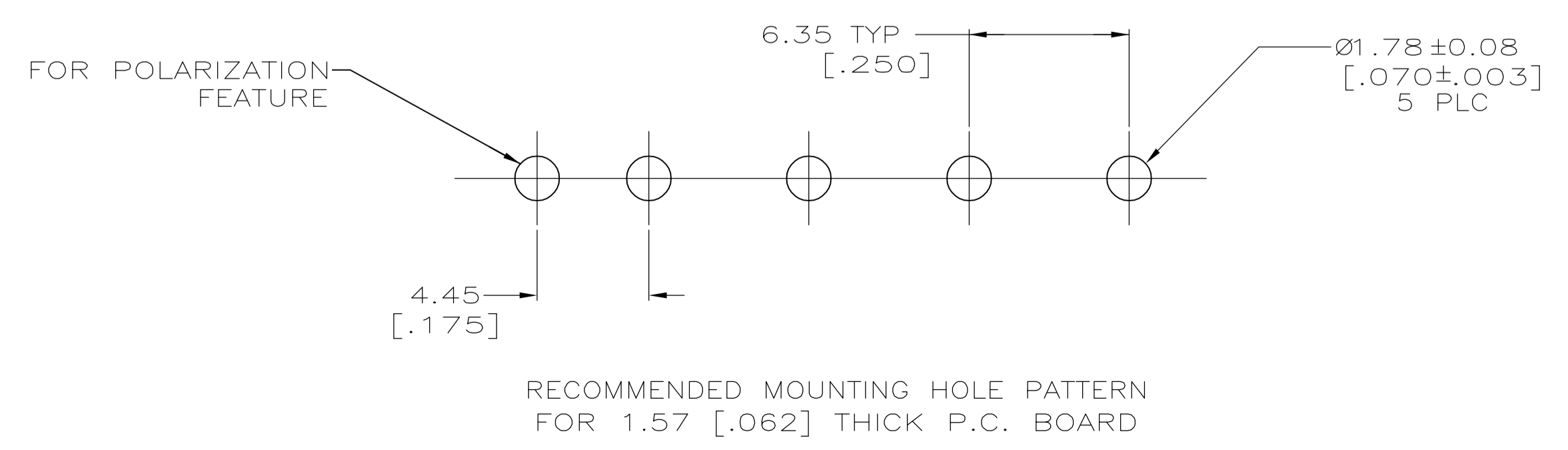
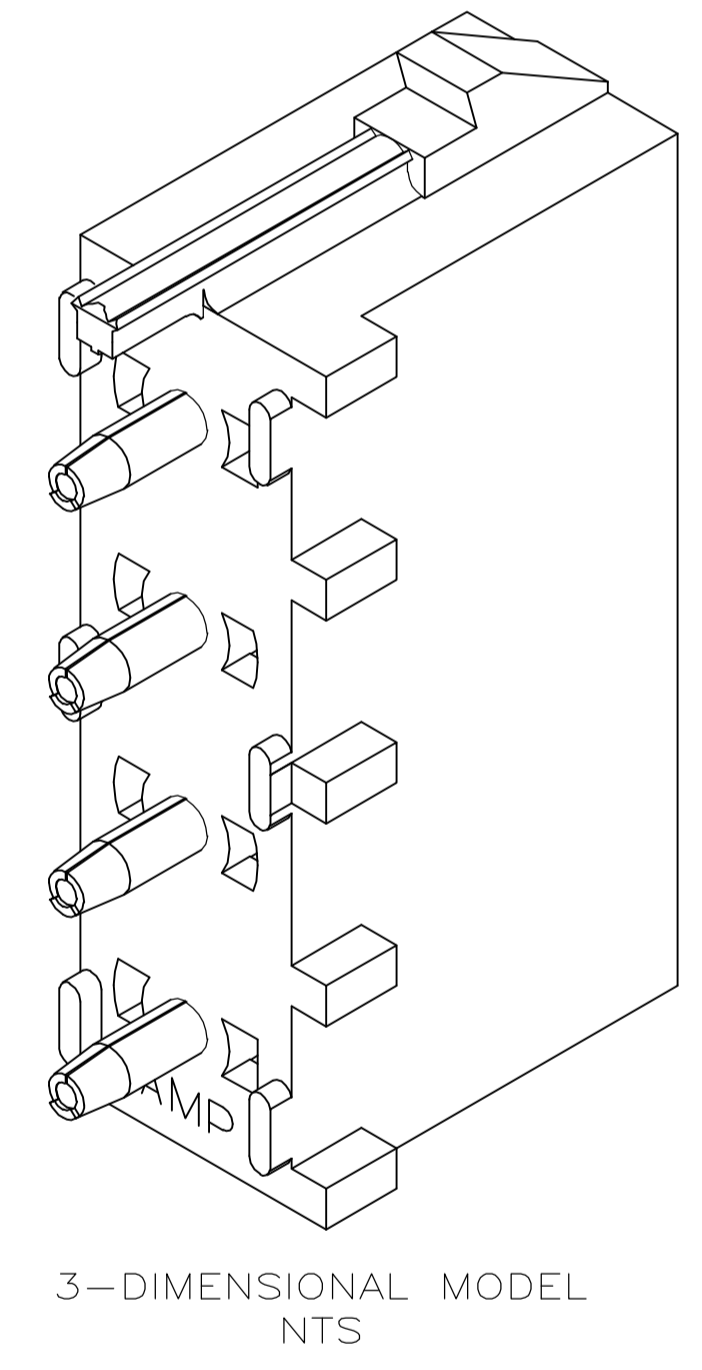
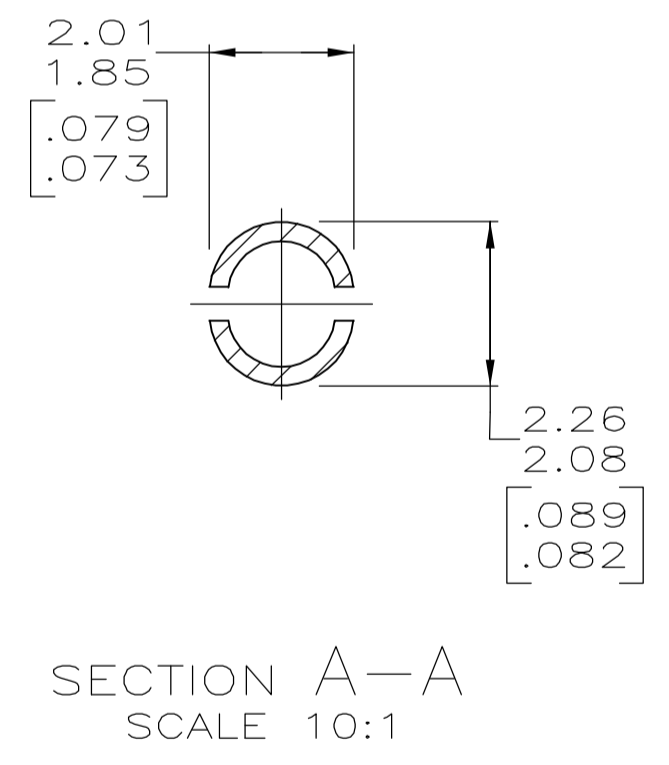
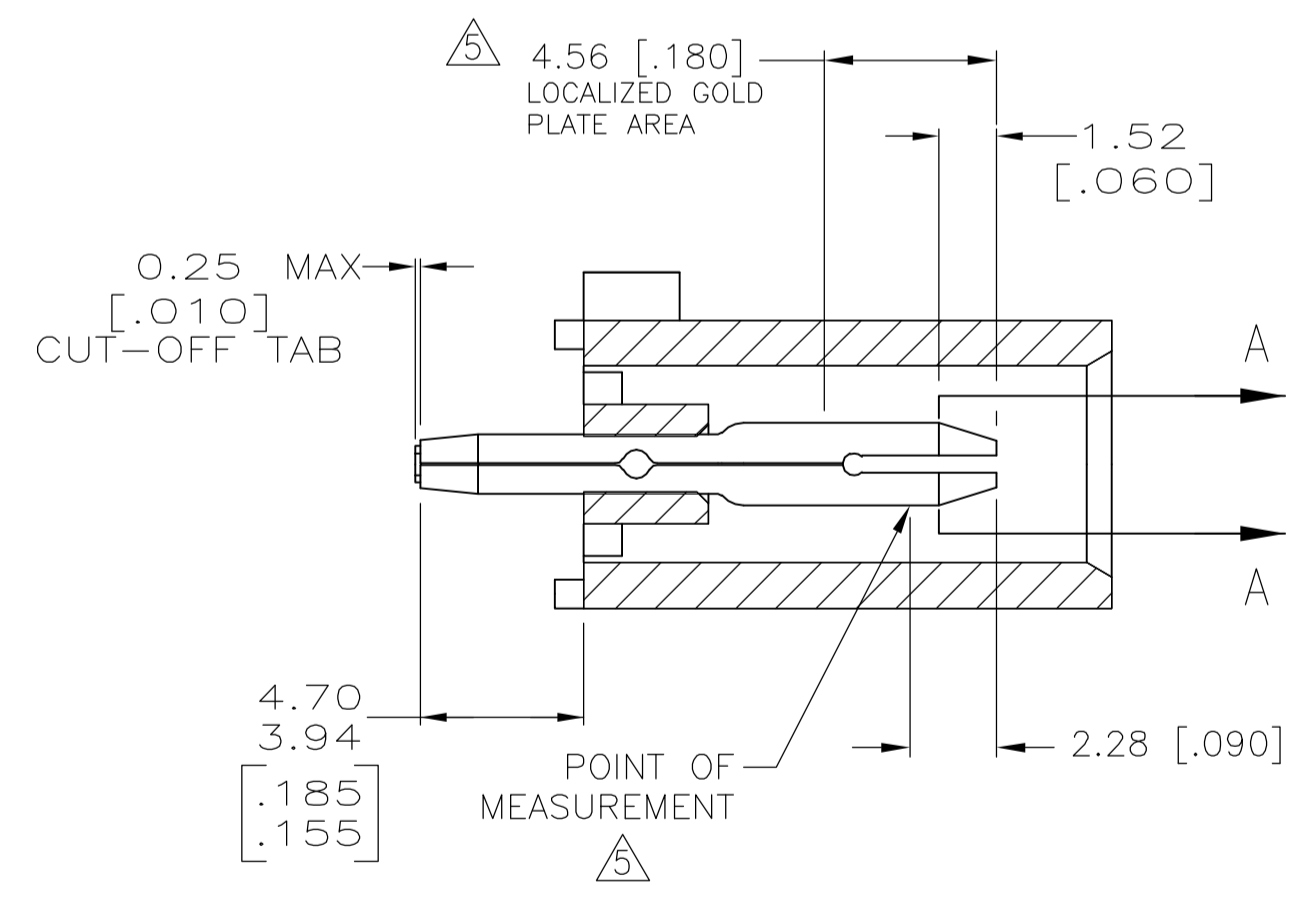
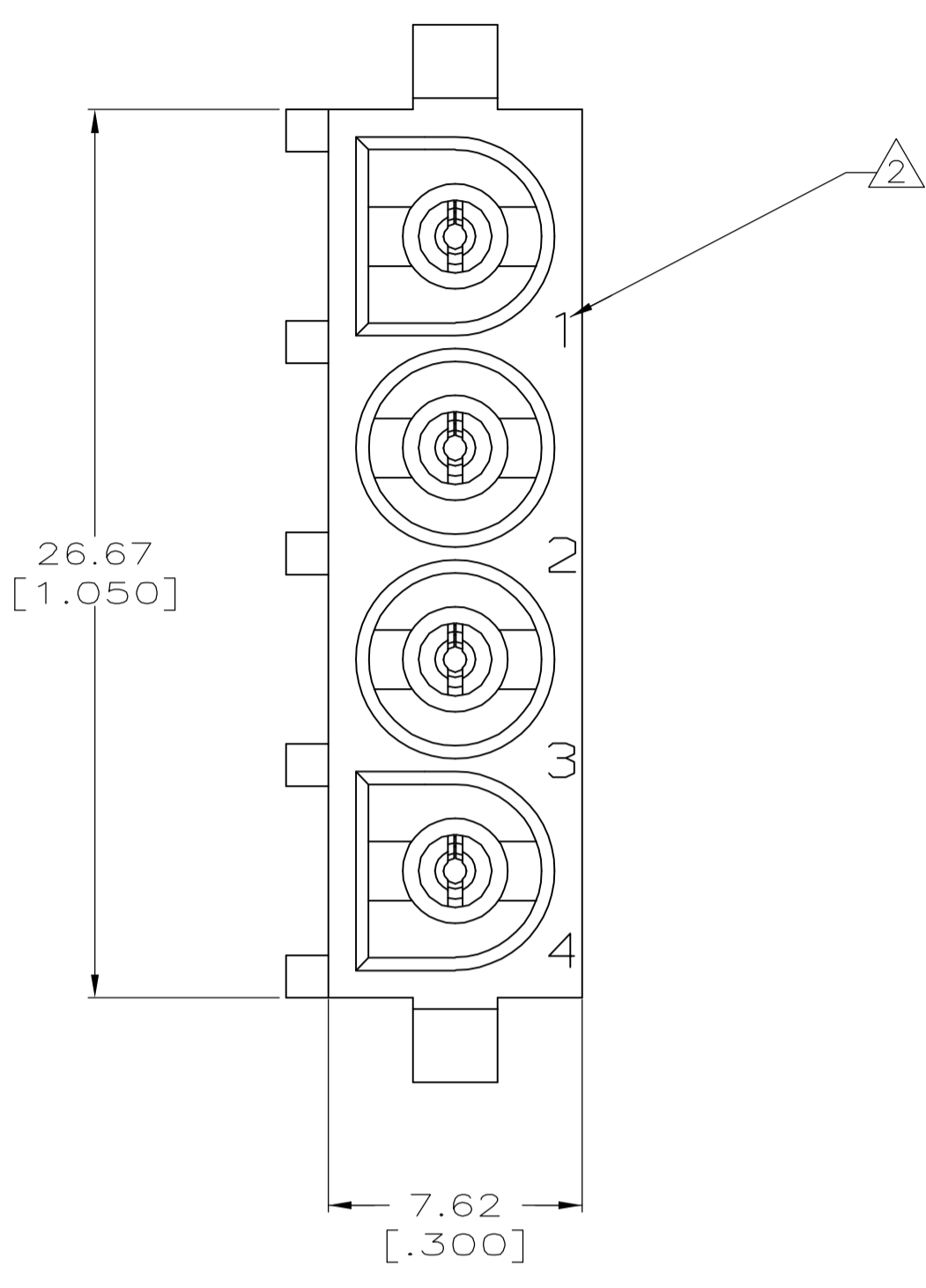
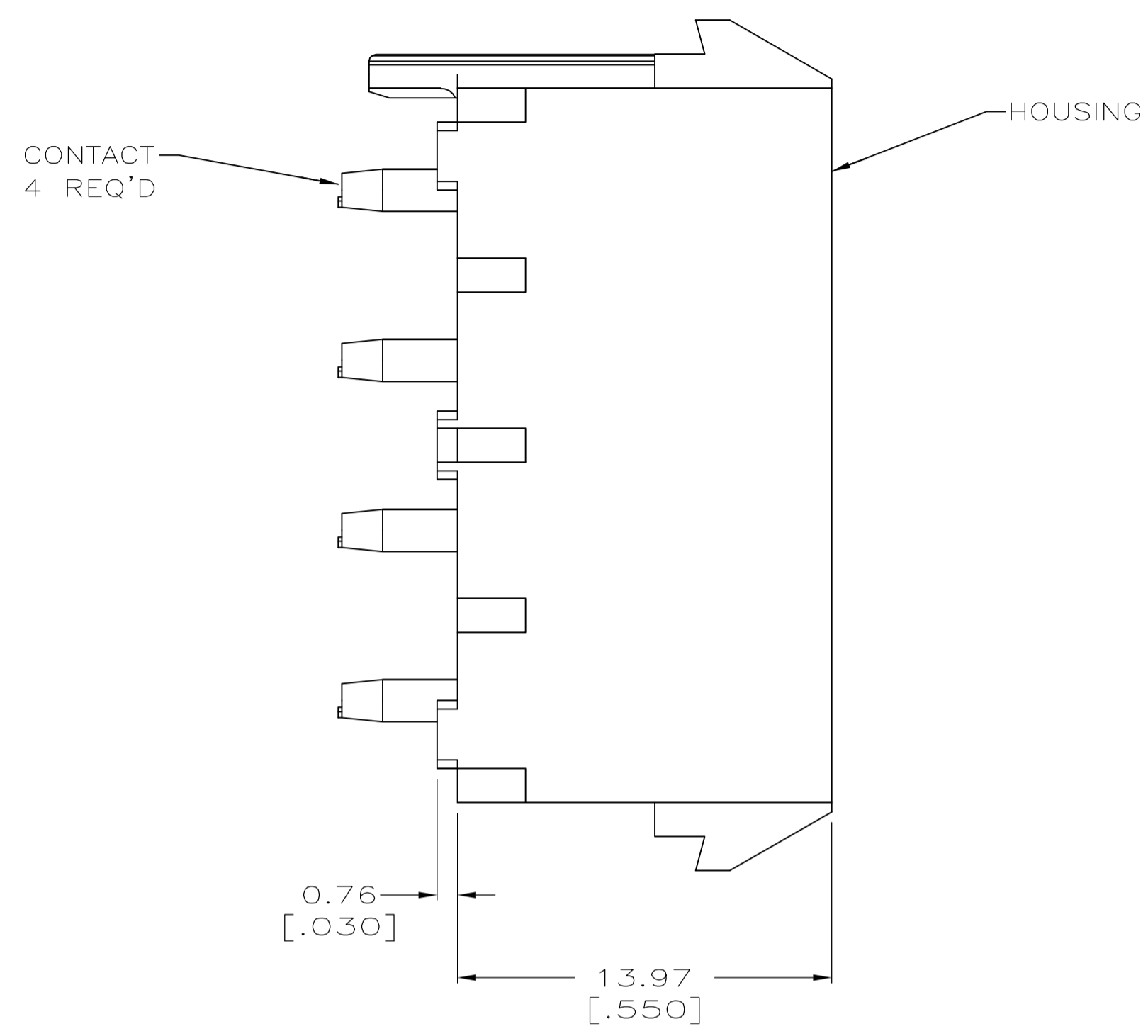
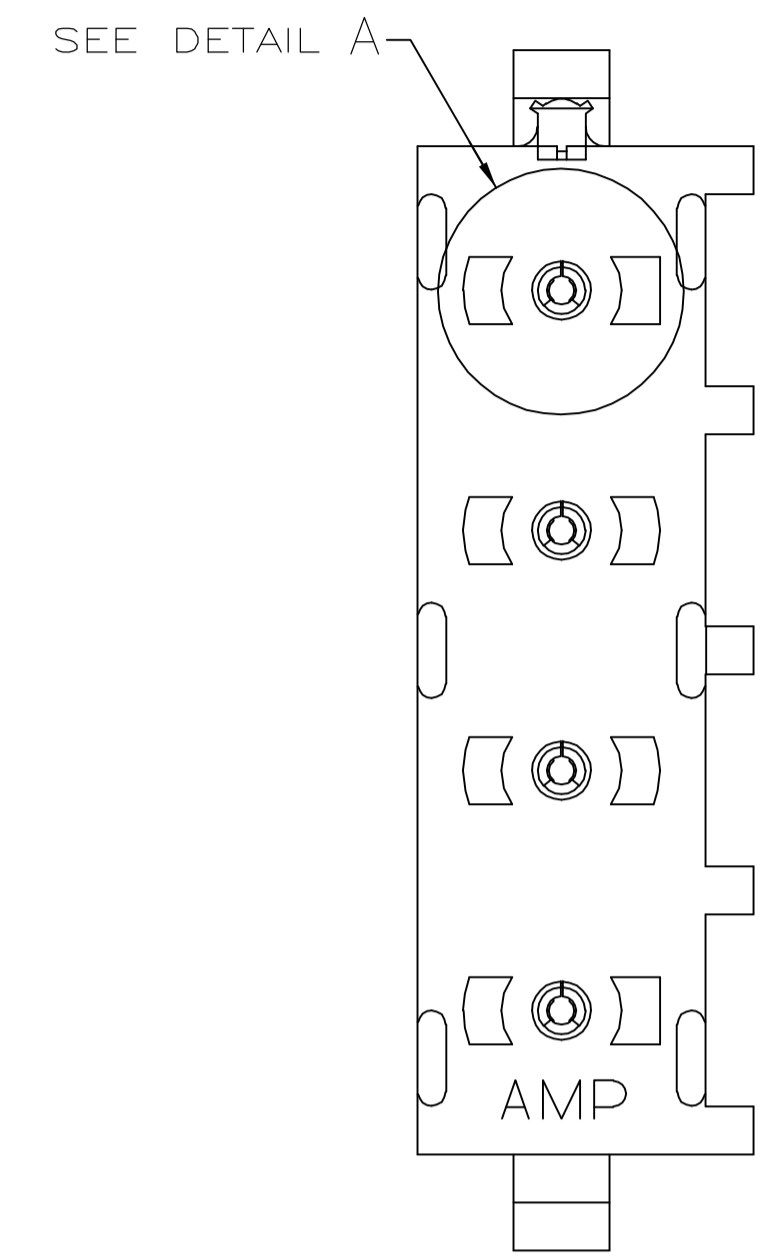


| LOC | | DIST | | REVISIONS | | | |
|-----|-----|---------------------------|---------|-----------|------|--|--|
| P | LTR | DESCRIPTION | DATE | DWN | APVD | | |
| P2 | | REVISED PER ECO-06-029027 | 12DEC06 | KW | SR | | |

- PARTS COMPLY TO AMP SOLDERABILITY SPECIFICATION 109-11-3.
- CIRCUIT IDENTIFICATION CHARACTERS ARE ADJACENT TO THE INDICATED CAVITIES, BUT LOCATION AND ORIENTATION MAY DIFFER FROM PRINT.
- DIMENSIONS IN BRACKETS ARE IN INCHES.
- DRAIN HOLES LOCATED AS SHOWN. OPTIONAL CONSTRUCTION- ALL DRAIN HOLES LOCATED 90° AS SHOWN IN DETAIL A.
- CONTACT IS PLATED OVERALL WITH 0.00127 [.000050] NICKEL, THEN 0.00076 [.000030] GOLD OVER CONTACT LENGTH INDICATED AND MATTE-TIN ON SOLDER TAIL END.



| | | |
|-----------------------------|----------------------------|-------------|
| PHOSPHOR BRONZE, PRE-TIN | NYLON, UL94V-0,BLUE | 6-641968-1 |
| PHOSPHOR BRONZE, GOLD | NYLON, UL94V-0,WHITE | 641968-4 |
| PHOSPHOR BRONZE, PRE-TIN | NYLON, UL94V-0,BLACK | 641968-3 |
| PHOSPHOR BRONZE, PRE-TIN | NYLON, UL94V-0,WHITE | 641968-1 |
| CONTACT MATERIAL AND FINISH | HOUSING MATERIAL AND COLOR | PART NUMBER |

| | | | | |
|--|--|--|---|--|
| THIS DRAWING IS A CONTROLLED DOCUMENT. | | DWN L. McEACHIN 07-JAN-2000 | Tyco Electronics Corporation Harrisburg, PA 17105-3608 | |
| DIMENSIONS: mm [INCHES] | | CHK K. COBLE 07-JUN-2000 | APVD K. COBLE 07-JUN-2000 | |
| TOLERANCES UNLESS OTHERWISE SPECIFIED: | | NAME PIN HEADER ASSEMBLY, POLARIZED, 4 CIRCUIT UNIVERSAL MATE-N-LOK(TM) | | |
| 0 PLC ± - | | APPLICATION SPEC | | |
| 1 PLC ± - | | SIZE A1 | | |
| 2 PLC ± 0.13 [.005] | | SCALE 5:1 | | |
| 3 PLC ± - | | SHEET 1 OF 1 | | |
| 4 PLC ± - | | REV P2 | | |
| ANGLES ± 0.30° | | CUSTOMER DRAWING | | |
| MATERIAL SEE TABLE | | WEIGHT - | | |
| FINISH SEE TABLE | | DRAWING NO. 641968 | | |

